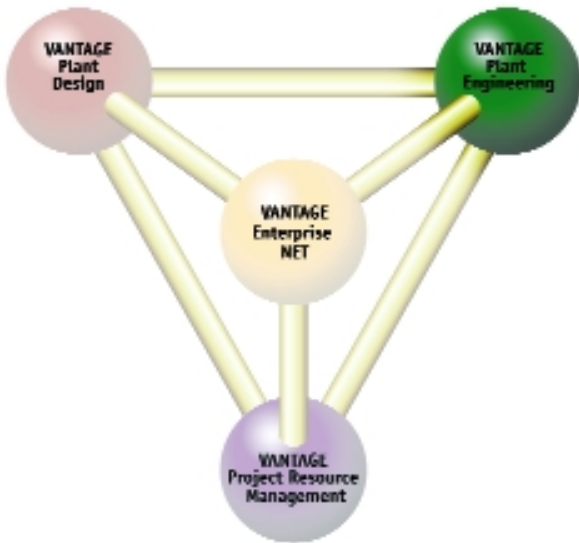




Plant Engineering Electrical



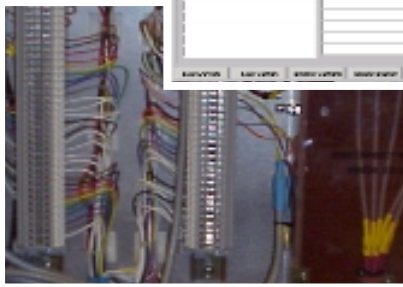
INTEGRATED BEST PRACTICE ENGINEERING

VANTAGE Plant Engineering has revolutionised the management of engineering information in the project. Its integrated engineering Workbench and data repository, with configurable workflow based applications, delivers an environment for creation, modification and reporting of all engineering data generated during the various phases of the project.

The Electrical application deals with activities relating to electrical engineering such as Power distribution, Equipment logical design, cable definition, sizing, routing and drumming. The data is then used in the generation of Electrical equipment datasheets, CAD drawings for schematics and Single line diagrams and Load schedule reports.

With best practice workflow management control employed across the engineer's Workbench, the integrated Process, Instrumentation, Electrical, Piping and Mechanical applications are presented with a single, consistent source of engineering data to each engineering discipline.

Additional Electrical related data can be sourced from VANTAGE Plant Engineering P&ID applications and/or from external systems. The data is managed and stored – with ownership maintained to prevent inconsistencies.



The Workbench provides the Electrical application with an environment that allows working data to be private to the owning discipline, and issuing of data for consumption by dependent disciplines. Plant items move through configurable life cycles, allowing items to be checked and approved before issue as appropriate, with event notification and messaging capabilities.

Electrical deliverables such as datasheets and reports can be configured, and generated automatically from the Workbench into the/your chosen format using a number of standard device drivers. A unique change highlight display provides readers of the data with powerful recognition of changes made since the last engineering issue.

Key Features:

- Web enabled and internationalised environment
- Integrated repository for all electrical equipment, Power distribution and cabling data
- Linked directly to P/process power requirements data, with automatic creation of motors from Process power consumption estimates
- Linked directly to control system data
- Automatic routing of cables
- Ability to build power distribution system
- Automatic or manual MCC sizing
- Automatic cable drumming
- Configurable validated lists of values for data consistency
- Automatic conversion of units to Project definable defaults
- Open API for data extraction including an XML generator and neutral format for interfacing and datasheet production
- All deliverables (datasheets, reports, electrical schematics, single line diagrams, load schedule, etc.) generated from single consistent data source
- Flexible tools for datasheet and report formatting
- Deliverables directly integrated with document management systems (optional)
- Change highlighting on data entry forms
- Datasheet change highlighting
- Workflow design of Electrical Distribution System
- Workflow design of Single Line Diagrams
- Workflow design of Cables and Cable Routing



**Four essential issues.
Four product families.
One world-class name.**
VANTAGE

www.aveva.com

AVEVA believes the information in this publication is correct as of its publication date. As part of continued product development, such information is subject to change without prior notice and is related to the current software release. AVEVA is not responsible for any inadvertent errors.

All product names mentioned are the trademarks of their respective holders.

© Copyright 2002 AVEVA Solutions Limited.

All rights reserved.

An AVEVA Group plc company.

0802/VPE Electrical/01

