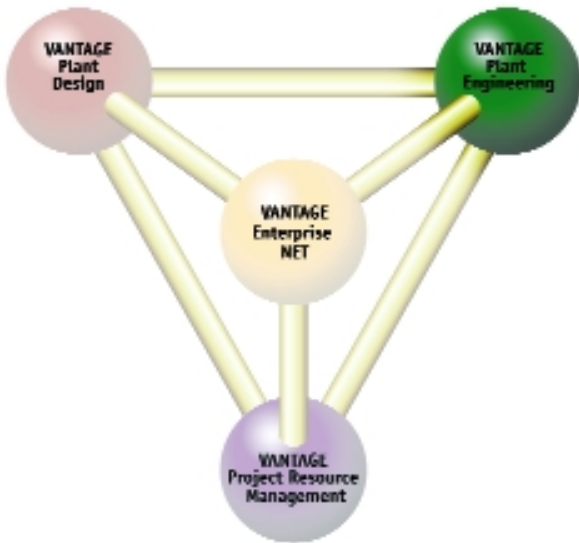




Plant Engineering Instruments



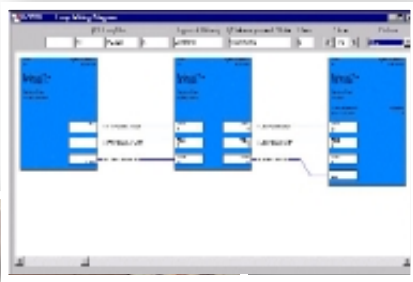
INTEGRATED BEST PRACTICE ENGINEERING

VANTAGE Plant Engineering is revolutionising the management of engineering information in the project. Its integrated engineering Workbench and data repository, with configurable workflow based applications, delivers an environment for creation, modification and reporting of all engineering data generated during the various phases of the project.

Best practice workflow management control is employed across the engineer's Workbench. Users of each of the integrated applications of Process, Instrumentation, Electrical, Piping and Mechanical are presented with a single, consistent source of engineering data relevant to each engineering discipline.

The Instrument application deals with activities relating to instrument engineering such as Instrument logical design, control loops, cable definition and routing. The data is then used in the generation of Instrument datasheets, individually or by requisition or specification, and CAD drawings for Instrument Loops and I/O schematics reports.

Additional Instrument related data can be sourced from VANTAGE Plant Engineering P&ID applications and/or from external systems. The data is managed and stored – with ownership maintained to prevent inconsistencies.



AVEVA



The Workbench provides the Instrument application with an environment that allows working data to be private to the owning discipline, and facilitates the issuing of data for consumption by dependent disciplines. Plant items move through configurable life cycles, allowing items to be checked and approved before issue as appropriate, with event notification and messaging capabilities.

Instrument deliverables such as datasheets and reports can be configured, and generated automatically from the Workbench into the/your chosen format using a number of standard device drivers. A unique change highlight display provides readers of the data with powerful recognition of changes made since the last engineering issue.

Key Features:

- Web enabled and internationalised environment
- Integrated repository for all instrument, systems control and cabling data
- Linked directly to process operating data (if process module used)
- Instrument Loop diagrams
- Instrument IO diagrams
- Import of field connection details for use in cabling
- Automatic routing of cables inclusive of import of cable tray details and tray load calculations
- Configurable validated lists of values for data consistency
- Automatic conversion of units to Project definable defaults
- Open API for data extraction including an XML generator and neutral format for interfacing and datasheet production
- All deliverables (datasheets, reports, loops etc.) generated from single consistent data source
- Flexible tools for datasheet and report formatting
- Deliverables directly integrated with document management systems (optional)
- Workflow between Instruments and Process
- Change highlighting on data entry forms and deliverables
- Datasheet production
- Datasheet change highlighting

Features to be included in 2002

- Improved cabling capability, with cables being separately data managed and a common cable schema to support both instruments and electrical
- Improved graphical cabling to the display and assignment of cables to IO and field devices
- Improved Junction box cabling, to cable based on a junction box view
- Integration capability for DCS vendor information
- Further integration with manufacturers' and standards-based Instrument calculation packages
- Support for emerging new technologies, such as Fieldbus, Profibus cabling



**Four essential issues.
Four product families.
One world-class name.**
VANTAGE

www.aveva.com

AVEVA believes the information in this publication is correct as of its publication date. As part of continued product development, such information is subject to change without prior notice and is related to the current software release. AVEVA is not responsible for any inadvertent errors.

All product names mentioned are the trademarks of their respective holders.

© Copyright 2002 AVEVA Solutions Limited.

All rights reserved.

An AVEVA Group plc company.

0802/VPE Instruments/01



AVEVA