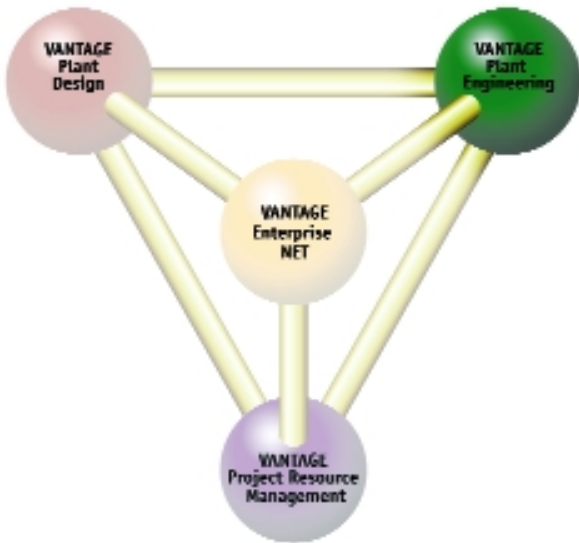




# Plant Engineering Mechanical



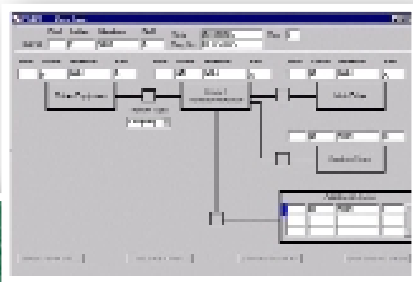
## INTEGRATED BEST PRACTICE ENGINEERING

VANTAGE Plant Engineering is revolutionising the management of engineering information in the project. Its integrated engineering Workbench and data repository, with configurable workflow based modules, delivers an environment for creation, modification and reporting of all engineering data generated during the various phases of the project.

Best practice workflow management control is employed across the engineer's Workbench. Users of each of the integrated applications of Process, Instrumentation, Electrical, Piping and Mechanical are presented with a single, consistent source of engineering data relevant to each engineering discipline.

The Mechanical application deals with activities relating to mechanical engineering such as detailed equipment design, drive trains, spares, inspection and civil details. The data is then used in the generation of Mechanical Equipment datasheets, and Package Plant reports.

Additional Mechanical related data can be sourced from VANTAGE Plant Engineering P&ID applications and/or from external systems. The data is managed and stored – with ownership maintained to prevent inconsistencies.



AVEVA



The Workbench provides the Mechanical application with an environment that allows working data to be private to the owning discipline, and facilitates the issuing of data for consumption by dependent disciplines. Plant items move through configurable life cycles, allowing items to be checked and approved before issue as appropriate, with event notification and messaging capabilities.

Mechanical deliverables such as datasheets and reports can be configured, and generated automatically from the Workbench into the/your chosen format using a number of standard device drivers. A unique change highlight display provides readers of the data with powerful recognition of changes made since the last engineering issue.

#### Key Features:

- Web enabled and internationalised environment
- Integrated repository for all Mechanical equipment specification data
- Linked directly to process operating data
- Linked directly to electrical motor and load data
- Ability to version all engineering objects and store version history
- Configurable validated lists of values for data consistency
- Automatic conversion of units to Project definable defaults
- All deliverables (datasheets, reports etc) generated from single consistent data source
- Open API for data extraction including an XML generator and neutral format for interfacing and datasheet production
- Flexible tools for datasheet and report formatting
- Deliverables directly integrated with document management systems (optional)
- Workflow Change highlighting on data entry forms
- Datasheet production
- Datasheet change highlighting
- Workflow design of Equipment specification and Motor sizing

#### Features to be included in 2002

- Wider Mechanical schedule
- Support for all Electrical items for our Power Industry users
- Detailed mechanical requirements for vendors' bid processes
- Import of Vendor information from the selected bid



**Four essential issues.  
Four product families.  
One world-class name.**  
**VANTAGE**

[www.aveva.com](http://www.aveva.com)

AVEVA believes the information in this publication is correct as of its publication date. As part of continued product development, such information is subject to change without prior notice and is related to the current software release. AVEVA is not responsible for any inadvertent errors.

All product names mentioned are the trademarks of their respective holders.

© Copyright 2002 AVEVA Solutions Limited.

All rights reserved.

An AVEVA Group plc company.

0802/VPE Mechanical/01



**AVEVA**