

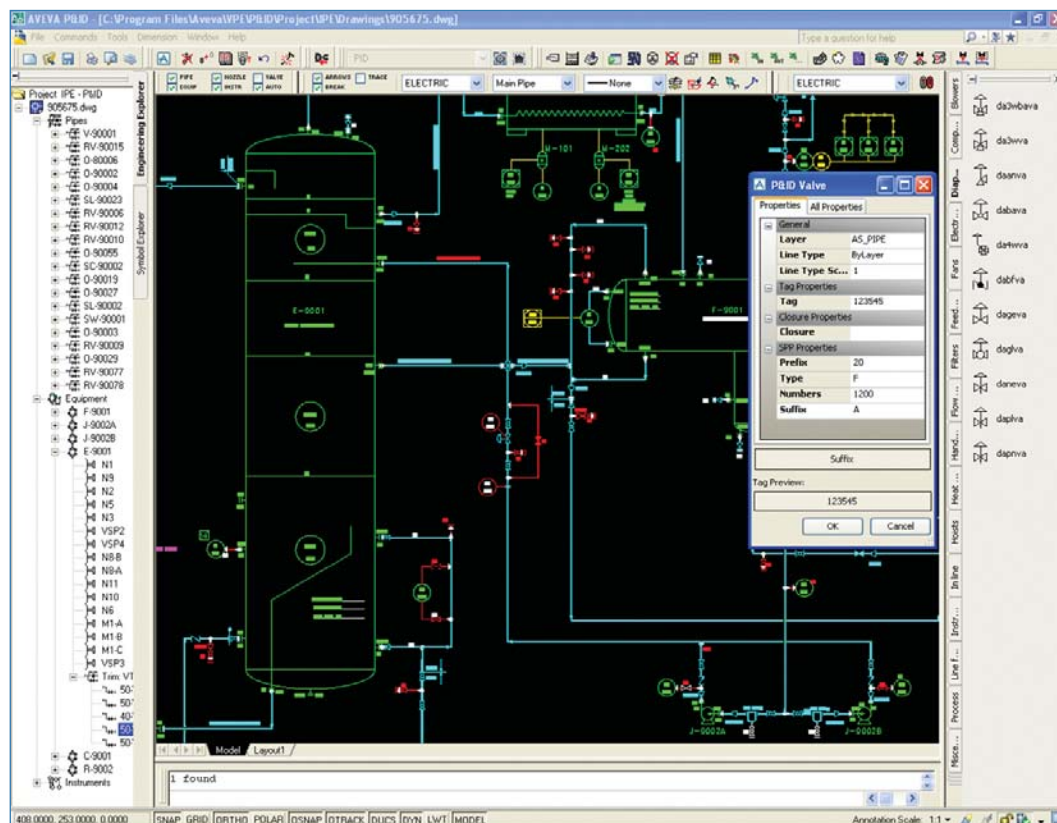
AVEVA P&ID 12.0

An intelligent, AutoCAD-based P&ID design application

AVEVA P&ID is a P&ID design system which stores intelligent engineering data onto graphical entities in an AutoCAD drawing while the designer draws and annotates the P&IDs.

These intelligent P&IDs, containing tagged items, quantities and connectivity data, can be loaded into the AVEVA schematic model via AVEVA Schematic Model Manager, or synchronised with the AVEVA VPE Workbench database for the production of project reports and datasheets.

AVEVA P&ID is quick to set up, easy to use and highly productive. It supports different engineering standards, individual company working methods, and complex projects containing many hundreds of P&IDs.



The AVEVA P&ID user interface, based on the familiar AutoCAD environment

Business Benefits

Design efficiency

- Intelligent data is created automatically as the design is drawn.
- User Defined Attributes allow customisation for individual projects.

Save time and cost

- Design data can be reused on subsequent projects.
- Easy generation of reports saves man-hours.

Eliminate errors

- Intelligent data and configurable automatic error-checking ensure design integrity from the outset.
- Supports ISO 15926 for standards compliance.

Easy to adopt

- Familiar AutoCAD environment ensures a minimal learning curve and ready availability of skilled users.

PLANT

MARINE

Key Features

Standard AutoCAD user interface and concepts

Being an extension to familiar AutoCAD features, P&ID can be easily adopted by AutoCAD users, with minimal training.

Highly productive

P&ID is a highly productive application that enables new and AutoCAD-experienced personnel to quickly become efficient and effective. Features such as 'Typicals' allow repeated parts of the design to be drawn once, but referenced many times. Copy-and-paste capabilities allow intelligent sections of drawings from previous or reference projects to be rapidly reused on new projects.

Database integration

P&ID integrates with both AVEVA Schematic Model Manager and AVEVA VPE Workbench, allowing a complete logical schematic model of the plant to be created in either system, and used with downstream engineering applications.

Effective stand-alone application

P&ID is also an efficient and productive stand-alone application, ideal for working at remote sites, or for project subcontractors. It includes Microsoft Access database functionality for checking tag duplication. P&IDs created or modified in stand-alone mode (off-line) can be synchronised with the rest of the project P&IDs.

Data integrity and consistency

P&ID carries out many data integrity checks to ensure that the data created is free of a wide range of inconsistencies. For example, stand-alone duplicate tag checking can be carried out automatically across the entire set of project drawings. Checking can be configured for different equipment groups to either warn of, or prevent, duplicate tag entries. Synchronising data with VPE Workbench or with P&ID Manager allows project data consistency to be checked.

Centralised project administration

Project administrators can configure P&ID on a project-wide basis to ensure consistent application of project rules.

Flexible project configuration

P&ID allows the use of many industry naming standards, such as ISA, KKS or PIP. It also allows for project configuration of attributes such as line styles, layers, colours, fonts, and so on, to produce P&IDs which comply with project CAD standards.

Easy-to-use symbol editor

New intelligent symbols can be added rapidly, or standard AutoCAD symbols reused by adding intelligence to them.

Spec-driven P&IDs

When piping specifications are available, P&ID allows these to be used when drafting the P&ID.

Automation functions

Automation functions make the P&ID drafting process fast and easy. P&IDs can be drawn once and reused within the design or elsewhere. Data from multiple P&IDs can be bulk edited via the Excel interface.

Excel interface

An Excel interface allows rapid extraction, editing and update of P&ID data. Attributes can be updated in Excel and imported back into the P&ID.

P&ID automatically validates imported project lists of values to identify inconsistencies and prevent unauthorised edits to the drawing. Individual Excel worksheets are configurable using the P&ID Administrator.

Standards compliant

P&IDs can be output in accordance with the ISO 15926 standard, allowing data to be exchanged between applications and stored in a neutral, product-independent form.

AVEVA believes the information in this publication is correct as of its publication date. As part of continued product development, such information is subject to change without prior notice and is related to the current software release. AVEVA is not responsible for any inadvertent errors. All product names mentioned are the trademarks of their respective holders.

© Copyright 2009 AVEVA Group plc. All rights reserved. PID/DS/1209

PLANT

MARINE

AVEVA
CONTINUAL PROGRESSION

AVEVA Group plc
High Cross Madingley Road Cambridge CB3 0HB UK
Tel: +44 (0)1223 556655 Fax +44 (0)1223 556666
www.aveva.com